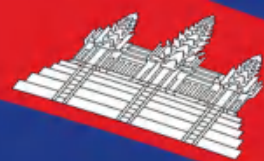




PCR TIRE CATALOG

Feel the difference





EVERLAST AS



- *Four main groove design provides excellent drainage performance;
- *The lateral and crossing groove design, improves the stability performance under dry and wet condition;
- *Mid "Z" groove design, improves all season condition stability performance;
- *Optimized arrangement of the variegated pattern design, reduced the tire noise.
- *Enhanced tire sidewall provides more protection for safe driving.

Size	LI/SI	UTQG	Rim	Max Load		Max Pressure		OD (mm)	SW (mm)	PD (mm)
				(kg)	(lbs)	(kPa)	(psi)			
185/65R15	88H	600 A A	5.5J	560	1235	300	44	621	189	7.8
195/65R15	91H	600 A A	6J	615	1356	300	44	635	201	7.8
205/55R16	91V	600 A A	6.5J	615	1356	300	44	632	214	7.8
205/60R16	92H	600 A A	6J	630	1389	300	44	652	209	7.8
205/65R15	94H	600 A A	6J	670	1477	300	44	647	209	7.8
205/65R16	95H	600 A A	6J	690	1521	300	44	672	209	7.8
215/60R16	95H	600 A A	6.5J	690	1521	300	44	664	221	7.8
225/60R16	98H	600 A A	6.5J	750	1653	300	44	676	228	7.8

EVERLAST PLUS



- *Four main groove design provides excellent drainage performance;
- *The lateral and crossing groove design, improves the stability performance under dry and wet condition;
- *Mid "Z" groove design, improves all season condition stability performance;
- *Optimized arrangement of the variegated pattern design, reduced the tire noise.
- *Enhanced tire sidewall provides more protection for safe driving.

Size	LI/SI	UTQG	Rim	Max Load		Max Pressure		OD (mm)	SW (mm)	PD (mm)
				(kg)	(lbs)	(kPa)	(psi)			
215/55R16	97H XL	600 A A	7J	730	1609	290	42	642	226	7.6
225/65R17	102H	600 A A	6 1/2J	850	1874	250	36	724	228	8.0
215/65R16	98T	600 A A	6 1/2J	750	1653	250	36	686	221	8.0
225/65R16	100H	600 A A	6 1/2J	800	1764	250	36	698	228	8.0
235/65R16	103T	600 A A	7J	875	1929	250	36	712	240	8.0
225/60R17	99H	600 A A	6 1/2J	775	1709	250	36	702	228	8.0
235/60R17	102H	600 A A	7J	850	1874	250	36	714	240	8.0
235/65R17	108H XL	600 A A	7J	900	1984	250	36	738	240	8.0
235/50R18	101V XL	600 A A	7 1/2J	730	1609	250	36	693	245	7.6
215/65R17	99H	600 A A	6 1/2J	775	1709	250	36	712	221	8.0



TRACKSTAR UHP

- *Four main groove design provides excellent drainage performance;
- *Wide shoulder pattern and special lateral groove design, improves the stability performance under dry and wet condition;
- *Asymmetric pattern design, balancing the handling stability and ride comfort of the tire;
- *3D groove design, improved stability in complex condition;
- *Optimized arrangement of the variegated pattern design, reduced the tire noise;
- *Enhanced tire sidewall provides more protection for safe driving.

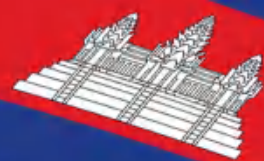
Size	LI/SI	UTQG	Rim	Max Load		Max Pressure		OD (mm)	SW (mm)	PD (mm)
				(kg)	(lbs)	(kPa)	(psi)			
215/45ZR17	91W XL	540 A A	7J	615	1356	340	49	626	213	8.0
215/55R17	94V	540 A A	7J	670	1477	300	44	668	226	8.0
225/40ZR18	92W XL	540 A A	8J	630	1389	340	49	637	230	8.0
225/45ZR17	94W XL	540 A A	7.5J	670	1477	340	49	634	225	8.0
225/45ZR18	95W XL	540 A A	7.5J	690	1521	340	49	659	225	8.0
245/45ZR18	100W XL	540 A A	8J	800	1764	290	42	677	243	9.0



MAGNUS 4X4

- *Four main groove design provides excellent drainage performance;
- *Closed tire shoulder design helps to reduce tire noise;
- *The lateral and crossing groove design, improves the stability performance in all seasons condition;
- *Optimized arrangement of the variegated pattern design, reduced the tire noise;
- *Enhanced tire sidewall provides more protection for safe driving.

Size	LI/SI	UTQG	Rim	Max Load		Max Pressure		OD (mm)	SW (mm)	PD (mm)
				(kg)	(lbs)	(kPa)	(psi)			
265/70R16	112H	600 A A	8J	1120	2469	300	44	778	272	8.5

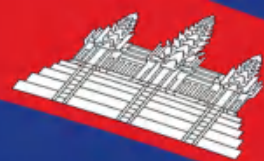


APHELIOS UHP



- *Four main groove design provides excellent drainage performance;
- *Wide shoulder pattern and special lateral groove design, improves the stability performance under dry and wet condition;
- *Asymmetric pattern design, balancing the handling stability and ride comfort of the tire;
- *Optimized arrangement of the variegated pattern design, reduced the tire noise;
- *Enhanced tire sidewall provides more protection for safe driving.

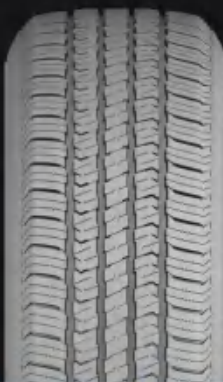
Size	LI/SI	UTQG	Rim	Max Load		Max Pressure		OD (mm)	SW (mm)	PD (mm)
				(kg)	(lbs)	(kPa)	(psi)			
225/50R17	98W XL	420 A A	7J	750	1653	340	49	658	233	7.6
235/45R18	98W XL	420 A A	8J	750	1653	340	49	669	236	7.6
235/40R19	96W XL	420 A A	8.5J	710	1565	340	49	671	241	7.6
245/40R19	98Y XL	420 A A	8.5J	750	1653	340	49	679	248	7.6
245/45R19	102W XL	420 A A	8J	850	1874	340	49	703	243	7.6
255/50R19	107Y XL	420 A A	8J	975	2150	340	50	739	265	7.6
245/40R20	99W XL	420 A A	8.5J	775	1709	340	49	704	248	7.6
245/45R20	103W XL	420 A A	8J	875	1929	340	49	728	243	7.6
215/50R17	95W XL	420 A A	7J	690	1521	340	49	648	226	7.6
215/45R18	93W XL	420 A A	7J	650	1433	340	49	651	213	7.6
225/35R18	87W XL	420 A A	8J	545	1201	290	42	615	230	7.6
255/35R18	94W XL	420 A A	9J	670	1477	340	49	635	260	7.6
255/40R18	99W XL	420 A A	9J	775	1709	340	49	661	260	7.6
225/55R18	102W XL	420 A A	7J	850	1874	340	49	705	233	7.6
235/55R18	104W XL	420 A A	7.5J	900	1984	340	49	715	245	7.6
245/40R18	97W XL	420 A A	8.5J	730	1609	340	49	653	248	7.6
225/45R19	96W XL	420 A A	7.5J	710	1565	340	49	685	225	7.6
245/35R19	93Y XL	420 A A	8.5J	650	1433	340	49	655	248	7.6
255/35R19	96W XL	420 A A	8J	710	1565	340	49	661	260	7.6
255/40R19	100Y XL	420 A A	9J	800	1764	340	49	687	260	7.6
275/35R19	100W XL	420 A A	9.5J	800	1764	340	49	675	278	7.6
235/55R19	105W XL	420 A A	7.5J	925	2039	340	49	741	245	7.6
245/35R20	95Y XL	420 A A	8.5J	690	1521	340	49	680	248	7.6
275/35R20	102W XL	420 A A	9.5J	850	1874	340	49	700	278	7.6
275/40R20	106W XL	420 A A	9.5J	950	2094	340	49	728	278	7.6
275/45R20	110Y XL	420 A A	9J	1060	2337	340	50	756	273	7.6
265/35R22	102W XL	420 A A	9.5J	850	1874	340	49	745	271	7.6
265/40R22	106W XL	420 A A	9.5J	950	2094	340	49	771	271	7.6
225/55R17	101W XL	420 A A	7J	825	1819	340	49	680	233	7.6
235/50R17	100W XL	420 A A	7.5J	800	1764	340	49	668	245	7.6
265/40R18	101W XL	420 A A	9.5J	825	1819	340	49	669	271	7.6
275/40R18	103W XL	420 A A	9.5J	875	1929	340	49	677	278	7.6
215/35R19	85W XL	420 A A	7 1/2J	515	1135	290	42	633	218	7.6
265/35R19	98Y XL	420 A A	9.5J	750	1653	340	49	669	271	7.6
265/50R19	110Y XL	420 A A	8.5J	1060	2337	340	50	749	277	7.6
265/35R20	99Y XL	420 A A	9.5J	775	1709	340	49	694	271	7.6



MAGNUS HT

- *Four main zigzag groove design provides excellent drainage performance and improves grip on mix road conditions;
- *Large tread pattern block design ensures optimized tire contact area and provides outstanding dry and wet handling performance;
- *The wave shape groove design, improves the stability performance in all seasons condition;
- *Optimized arrangement of the variegated pattern design, reduced the tire noise;
- *Enhanced tire sidewall provides more protection for safe driving.

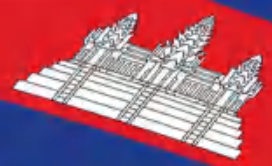
Size	LI/SI	UTQG	Rim	Max Load		Max Pressure		OD (mm)	SW (mm)	PD (mm)
				(kg)	(lbs)	(kPa)	(psi)			
LT215/85R16	115/112S	-	6J	D1120 S1215	D2469 S2679	550	80	772	216	10.7
LT225/75R16	115/112S	-	6J	D1120 S1215	D2469 S2679	550	80	744	223	10.7
LT245/75R16	120/116S	-	7J	D1250 S1400	D2756 S3086	550	80	774	248	10.7



VEIGAR HT

- *With ultimate tread block rigidity which maximizes traction in a variety of highway conditions and improves overall handling performance.
- *Improves tread block rigidity, optimizing handling performance and ride quality.
- *In combination with optimized sipes, the high-stability center rib enhances steering, handling, and braking performance.

Size	LI/SI	UTQG	Rim	Max Load		Max Pressure		OD (mm)	SW (mm)	PD (mm)
				(kg)	(lbs)	(kPa)	(psi)			
245/60R18	105H	480 A A	7J	925	2039	250	36	751	248	8.5
245/65R17	111H XL	480 A A	7J	1090	2403	290	42	750	248	8.5
235/55R18	104H XL	480 A A	7 1/2J	900	1984	290	42	715	245	8.5
235/60R18	107H XL	480 A A	7J	975	2149	290	42	739	240	8.5
235/65R18	106H	480 A A	7J	950	2094	250	36	763	240	8.5
255/55R18	109H XL	480 A A	8J	1030	2271	290	42	737	265	8.5
255/65R18	111H	480 A A	7 1/2J	1090	2403	250	36	789	260	8.5
265/65R18	114H	480 A A	8J	1180	2601	250	36	801	272	8.5
245/55R19	103H	480 A A	7 1/2J	875	1929	250	36	753	253	8.5
255/60R19	109H	480 A A	7 1/2J	1030	2271	250	36	789	260	8.5
255/50R20	109H XL	480 A A	8J	1030	2271	290	42	764	265	8.5
265/50R20	111H XL	480 A A	8 1/2J	1090	2403	290	42	774	277	8.5
235/65R16C	115/112R	480 A A	7J	D1120 S1215	D2469 S2679	550	80	712	240	8.5



RAMMUS XT



- *Block edge steps, open shoulders, and stone ejectors deliver excellent off-road traction while maintaining both wet and dry on-road performance.
- *Continuous shoulder zig-zag grooves and center x-shaped grooves improve evacuation of rain, mud, and snow and overall handling in all weather conditions.
- *Shoulder block design extends from tread shoulder block to sidewall, protecting against sharp rocks and providing additional off-road and off-camber traction.

Size	LI/SI	UTQG	Rim	Max Load		Max Pressure		OD (mm)	SW (mm)	PD (mm)
				(kg)	(lbs)	(kPa)	(psi)			
235/75R15	109T	-	6 1/2J	1030	2271	290	42	733	235	10.3
265/70R16	112T	-	8J	1120	2469	250	36	778	272	10.3
LT245/75R16	120/116Q	-	7J	D 1250 S 1400	D 2756 S 3086	550	80	774	248	12.5
33*12.50R18	118R	-	10J	1320	2910	450	65	832	318	12.5
33*12.50R18	122R	-	10J	1500	3305	550	80	832	318	12.5
35*12.50R18	123R	-	10J	1550	3415	450	65	883	318	12.5
35*12.50R18	128R	-	10J	1800	3970	550	80	883	318	12.5
275/55R20	117T XL	-	8 1/2J	1285	2833	290	42	810	284	10.3
LT275/55R20	120/117S	-	8 1/2J	D 1285S 1400	D 2835S 3085	550	80	810	284	12.5
275/60R20	115T	-	8J	1215	2679	250	36	838	279	10.3
33*12.50R20	114R	-	10J	1180	2600	450	65	832	318	12.5
33*12.50R20	119R	-	10J	1360	3000	550	80	832	318	12.5
35*12.50R20	121R	-	10J	1450	3195	450	65	883	318	12.5
35*12.50R20	125R	-	10J	1650	3640	550	80	883	318	12.5
LT225/75R16	115/112S	-	6J	D 1120S 1215	D 2470S 2680	550	80	744	223	12.5
LT235/85R16	120/116S	-	6 1/2J	D 1260S 1380	D 2778S 3042	550	80	806	235	12.5
LT265/75R16	123/120Q	-	7 1/2J	D 1400S 1550	D 3085S 3415	550	80	804	267	12.5
LT285/75R16	126/123Q	-	8J	D 1550S 1700	D 3415S 3750	550	80	834	286	12.5
LT245/70R17	119/116S	-	7J	D 1250S 1360	D 2755S 3000	550	80	776	248	12.5
LT245/75R17	121/118S	-	7J	D 1320S 1450	D 2910S 3195	550	80	800	248	12.5
LT265/70R17	121/118Q	-	8J	D 1320S 1450	D 2910S 3195	550	80	804	272	12.5
265/70R17	115S	-	8J	1215	2679	250	36	804	272	10.3
LT285/70R17	121/118Q	-	8 1/2J	D 1320S 1450	D 2910S 3195	550	80	832	292	12.5
33*12.50R17	120R	-	10J	1400	3085	450	65	832	318	12.5
35*12.50R17	121R	-	10J	1450	3195	450	65	883	318	12.5
35*12.50R17	124R	-	10J	1600	3525	450	65	883	318	12.5
LT265/70R18	124/121S	-	8J	D 1450S 1600	D 3195S 3525	550	80	829	272	12.5
LT275/70R18	125/122R	-	8J	D 1400S 1650	D 3085S 3640	550	80	843	279	12.5
LT285/55R20	122/119S	-	9J	D 1360S 1500	D 3000S 3305	550	80	822	297	12.5
LT285/60R20	-	-	-	-	-	-	-	-	-	12.5
LT275/65R20	126/123R	-	8J	D 1550S 1700	D 3415S 3750	550	80	866	279	12.5
LT265/50R20	117/114S	-	-	-	-	-	-	-	-	12.5
37*13.50R20	127Q	-	11J	1750	3860	450	65	934	345	12.5
37*13.50R20	128Q	-	11J	1800	3970	550	80	934	345	12.5
305/40R22	114H	-	11J	1180	2601	290	42	803	313	10.3
305/45R22	118T XL	-	10J	1320	2910	290	42	833	303	10.3
285/45R22	114T XL	-	9 1/2J	1180	2601	290	42	815	285	10.3
33*12.50R22	109R	-	10J	1030	2270	450	65	832	318	12.5
33*12.50R22	114Q	-	10J	1180	2600	550	80	832	318	12.5
35*12.50R22	117R	-	10J	1285	2835	450	65	883	318	12.5
35*12.50R22	121Q	-	10J	1450	3195	550	80	883	318	12.5
33*12.50R24	110Q	-	11 1/2J	1060	2337	450	65	832	320	12.5



THOMMAIL MT

*The outside blocks are designed for extended wear with an aggressive look.

*Designed with an optimized void ratio to allow for a high surface area, improving mud traction and promoting long, even tread wear, while effectively cleaning out rocks in off-road conditions.

*Advanced engineering of the shoulder and sidewall design details give the tire uniformity and control stability.

Size	LI/SI	UTQG	Rim	Max Load		Max Pressure		OD (mm)	SW (mm)	PD (mm)
				(kg)	(lbs)	(kPa)	(psi)			
30*9.50R15LT	104Q	-	7 1/2J	900	1985	350	50	756	240	16.0
31*10.50R15LT	109Q	-	8 1/2J	1030	2270	350	50	781	268	16.0
33*12.50R15LT	108Q	-	10J	1000	2205	250	36	832	318	16.0
35*12.50R24LT	-	-	-	-	-	-	-	-	-	16.0
33*12.50R20LT	114Q	-	10J	1180	2600	450	65	832	318	16.0
33*12.50R20LT	119Q	-	10J	1360	3000	550	80	832	318	16.0



MADE IN CAMBODIA



China Office:

🏠 15F, Mingzuo Mansion, No. 111 Haibin
North Road, Weihai, China

📞 +86 631 5280059

✉️ cathy@barkleytire.com



U.S.A. Office:

🏠 6047 Malburg Way, Vernon, CA
90058

📞 323 579 1908

✉️ ronnie_ding@barkleytire.com